

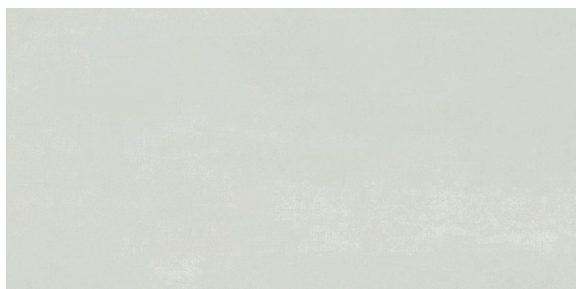


ConcreteX

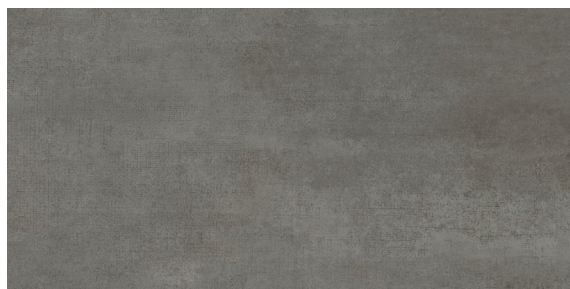
Rectified Color-body Porcelain Floor Tile

ConcreteX Color-body Porcelain | Floor Tile Collection

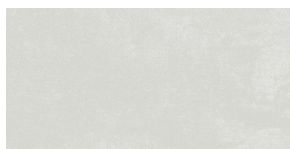
PRODUCTS



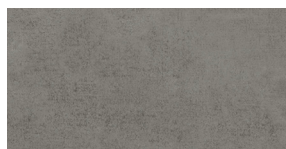
Harbor
24" x 48"
1CXHARTX24X48



Steel
24" x 48"
1CXSTETX24X48



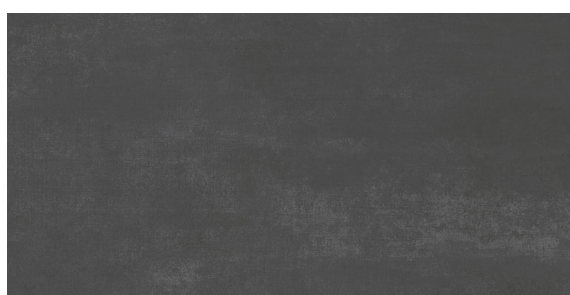
Harbor
12" x 24"
1CXHARTX12X24



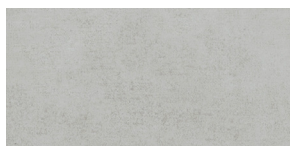
Steel
12" x 24"
1CXSTETX12X24



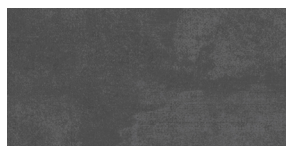
Smoke
24" x 48"
1CXSMOTX24X48



Carbon
24" x 48"
1CXCARTX24X48



Smoke
12" x 24"
1CXSMOTX12X24



Carbon
12" x 24"
1CXCARTX12X24

PRODUCT SPECS

All items available in:



12" x 24"

Piece Size: 11.81" x 23.62"
Thickness: 9 mm
Material: Porcelain



24" x 48"

Piece Size: 23.66" x 47.24"
Thickness: 9 mm
Material: Porcelain

| | PCS/BOX | PCS/PALLET | BOXES/PALLET | BOX WEIGHT (LBS) | PALLET WEIGHT (LBS) | SQFT/PCS | SQFT/BOX | SQFT/PALLET |
|-----------|---------|------------|--------------|------------------|---------------------|----------|----------|-------------|
| 12" x 24" | 6 | 240 | 40 | 43.68 | 1747 | 1.937 | 11.622 | 464.88 |
| 24" x 48" | 2 | 72 | 36 | 63.48 | 2285 | 7.75 | 15.5 | 558 |

Technical Specs:

| | Standard | Result |
|------------------------------------|---------------------------|-------------------------------|
| Scratch Resistance | MOHÖs Scale | Min. 7 |
| Coefficient of Friction (DCOF) | ANSI A326.3 | ≥ 0.42 |
| Deep Abrasion | ASTM C1243 | Unglazed: Max 175mm |
| Color Uniformity | ASTM C609 and Section 9.3 | Max. 3 Judds |
| Water Absorption | ASTM C373 | Wa ≥ 0.5% |
| Breaking Strength | ASTM C648 | Average ≥ J275 lbf. (1.22 kN) |
| Resistance to Freeze /Thaw Cycling | ASTM C1026 | Pass |
| Shade and Texture Rating | — | V3 |

Usage:

Interior Wall

Interior Floor

Backsplash

Interior Countertop

Shower/Wet Areas

Fireplace Surrounds

Exterior Wall

Exterior Floor

Exterior Countertop

Pool/Fountain

All Items

Application - Residential/Commercial

*Recommended uses only apply for properly installed material according to TCNA guidelines. All information is subject to change; refer to the website for most updated information. Images were digitally enhanced; for color accuracy, please request a sample.

